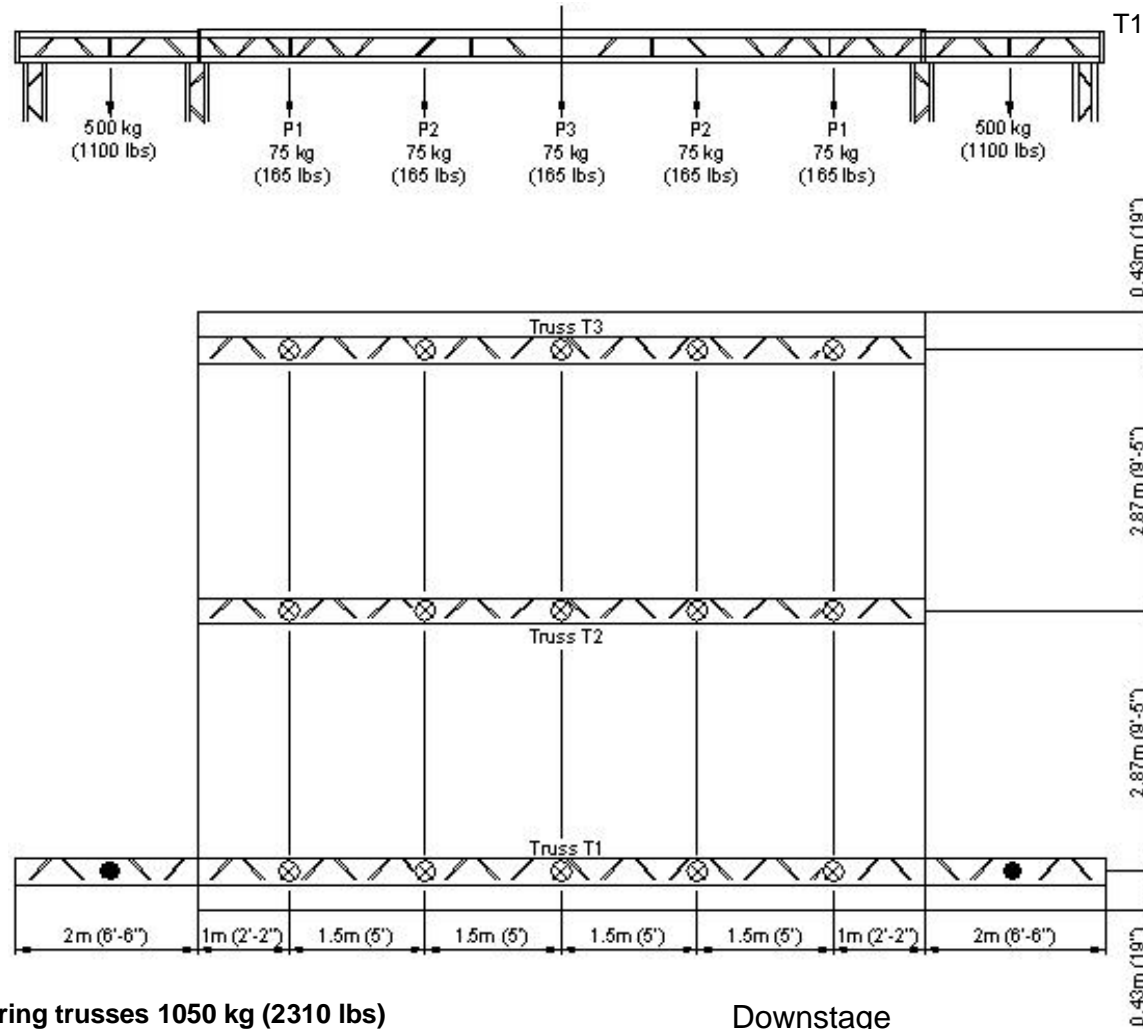


Stagemobil®
KARL ECKART
FAHRZEUGBAU GmbH
 Tel. 05675/350 – Fax 05675/5340
 Bremer Landstraße 25
 34369 Hofgeismar/Hümme

Stagemobil XL

LOAD BEARING TRUSSES

Total Maximum 350 kg (770 lbs)
 RIGGING PATTERNS
 T1-T3: USE P1 or P2 or P3



Maximum load bearing capacity of all 3 bearing trusses 1050 kg (2310 lbs)

Downstage

● Rigging point maximum capacity: 500 kg (1100 lbs)

⊗ Rigging point maximum capacity: 75 kg (165 lbs)

All loads should be evenly distributed.

Stage specifications subject
 To change without notice
 Figures are within inch or

Rigging Plan